

Railview Apartments

1015 2nd Ave.
Proctor, MN 55810

A Section 8 Elderly/Handicapped
Housing Community



Now accepting applications!
Call for your private showing

Phone: 624-3824

Email:

railview@olivercompanies.com

Website:

rentwitholiver.com



Eligibility is determined on the basis of federally established income, assets, and family composition standards.

To be eligible for housing assistance, the combination of the family's annual gross income and a percentage of the family's assets valued over \$5,000 must not exceed the annual income limitations as shown below:

1-person: \$26,750

2-people: \$30,550

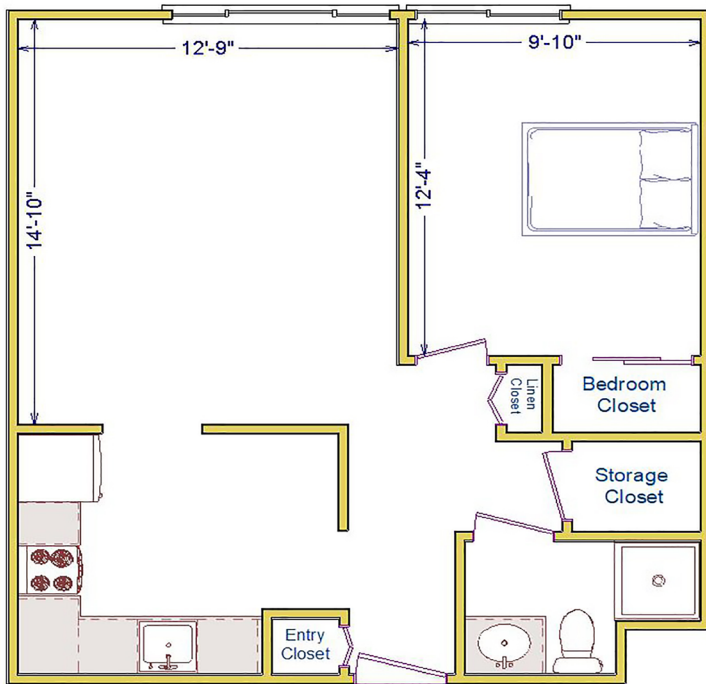
3-people: \$34,350

4-people: \$38,150

Additional factors may also apply. Please contact the property or main office for more information.

Railview housing community features:

- * 60 units: 1 & 2 bedroom apartments
- * elevator and garbage chute
- * community room, bathtub rooms, and TV room
- * on-site coin-operated laundry machines
- * off-street parking
- * on the bus line
- * 10 minute drive to downtown Duluth or Hermantown
- * spacious yard for relaxing and recreation
- * numerous tenant-organized events



RAILVIEW
1 BEDROOM
570 SQ FT



PROUDLY MANAGED BY:



OLIVER

MANAGEMENT SERVICES

5713 GRAND AVE SUITE B

DULUTH, MN 55807

(218) 628-0311 * FAX (218) 624-2235



Laundry Room



Community Room